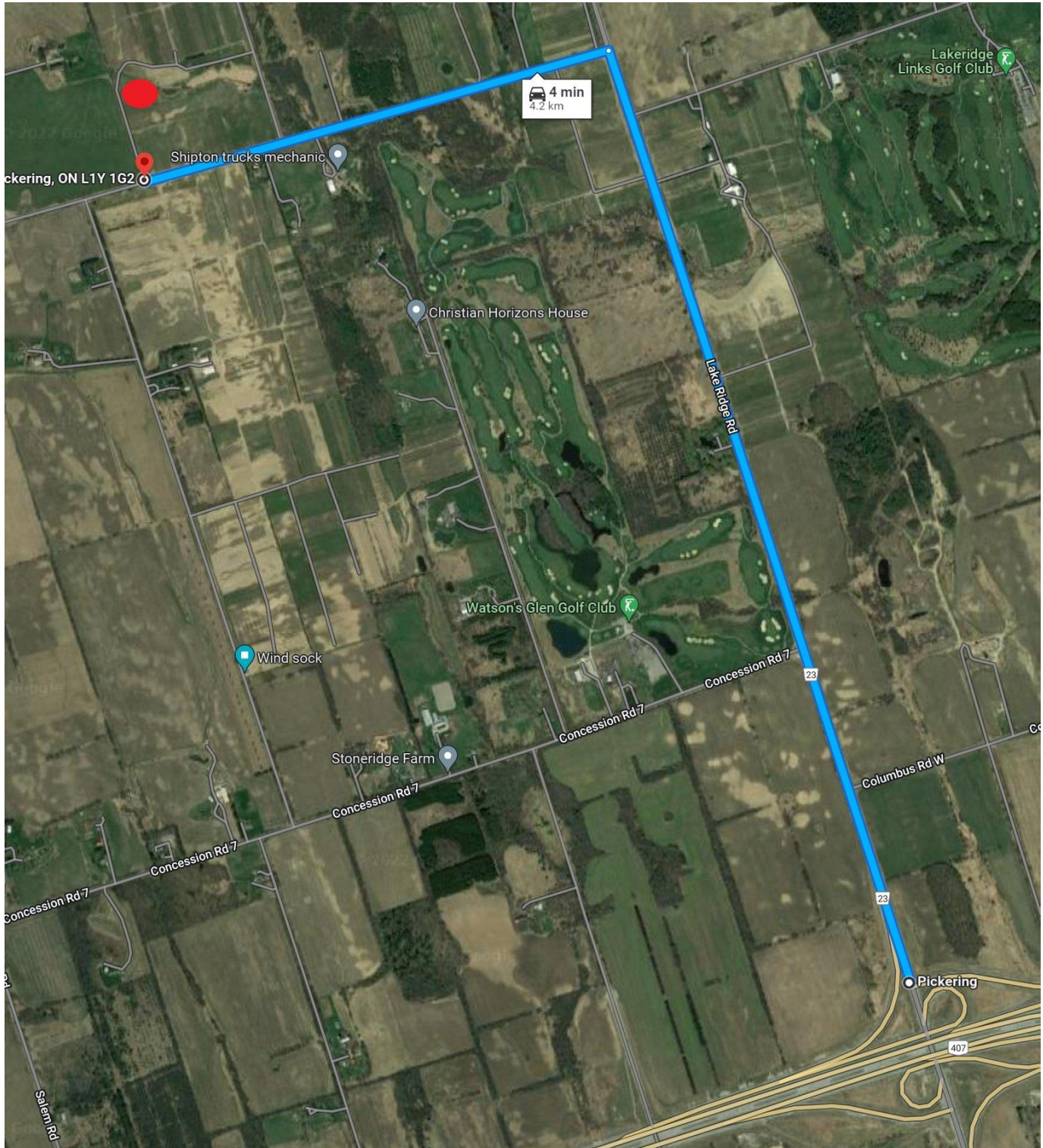


# RCFCT – Field Proposal

## Directions to the potential future Field

Starting North bound on Lakeridge Road (23), North of HWY 407

Travel North 2.8km on Lakeridge Road (23) past Concession Rd 7 (Watson's Glen Golf Club) to Concession Road 8.

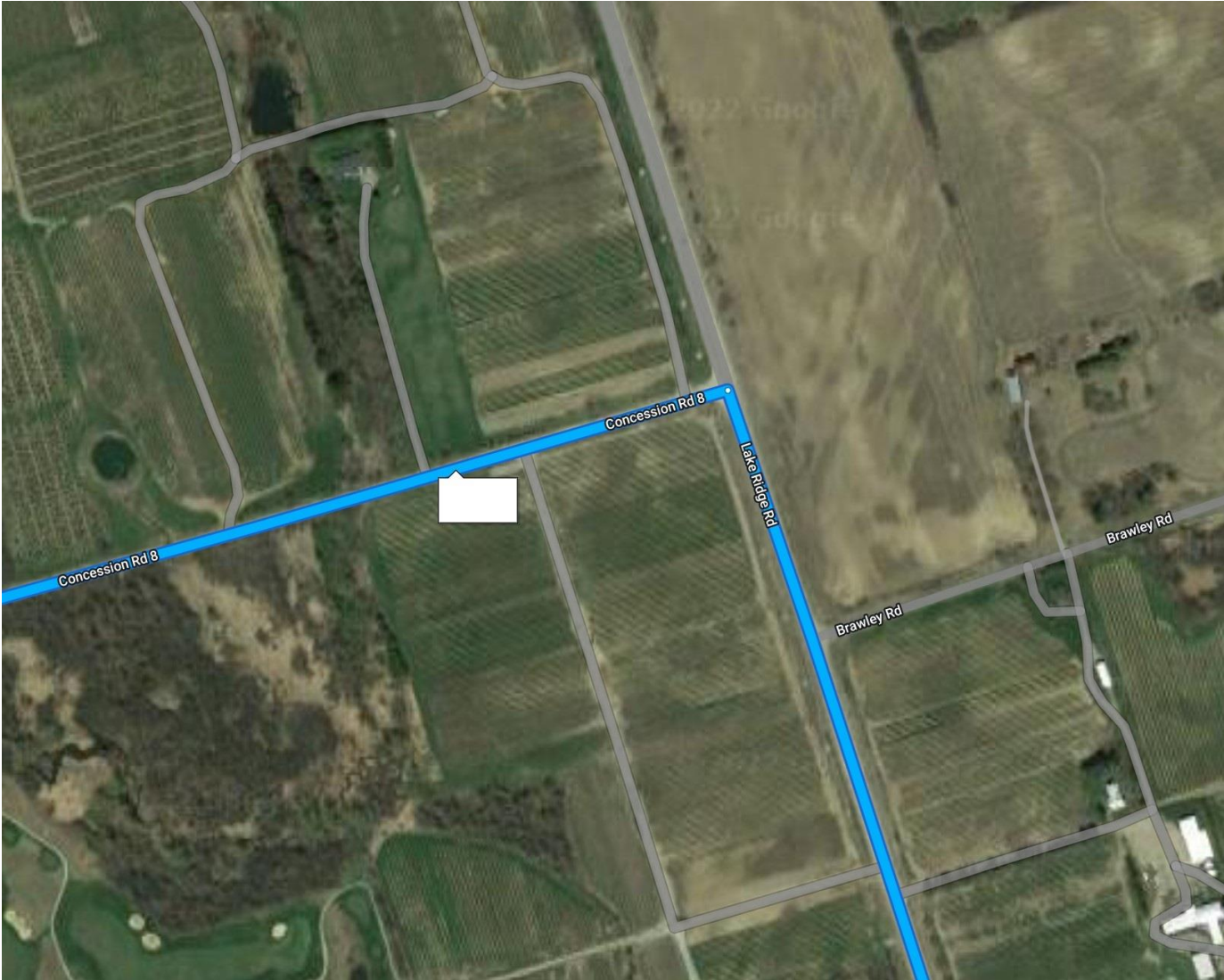




# RCFCT – Field Proposal

---

Turn Left (West) on to Concession Road 8



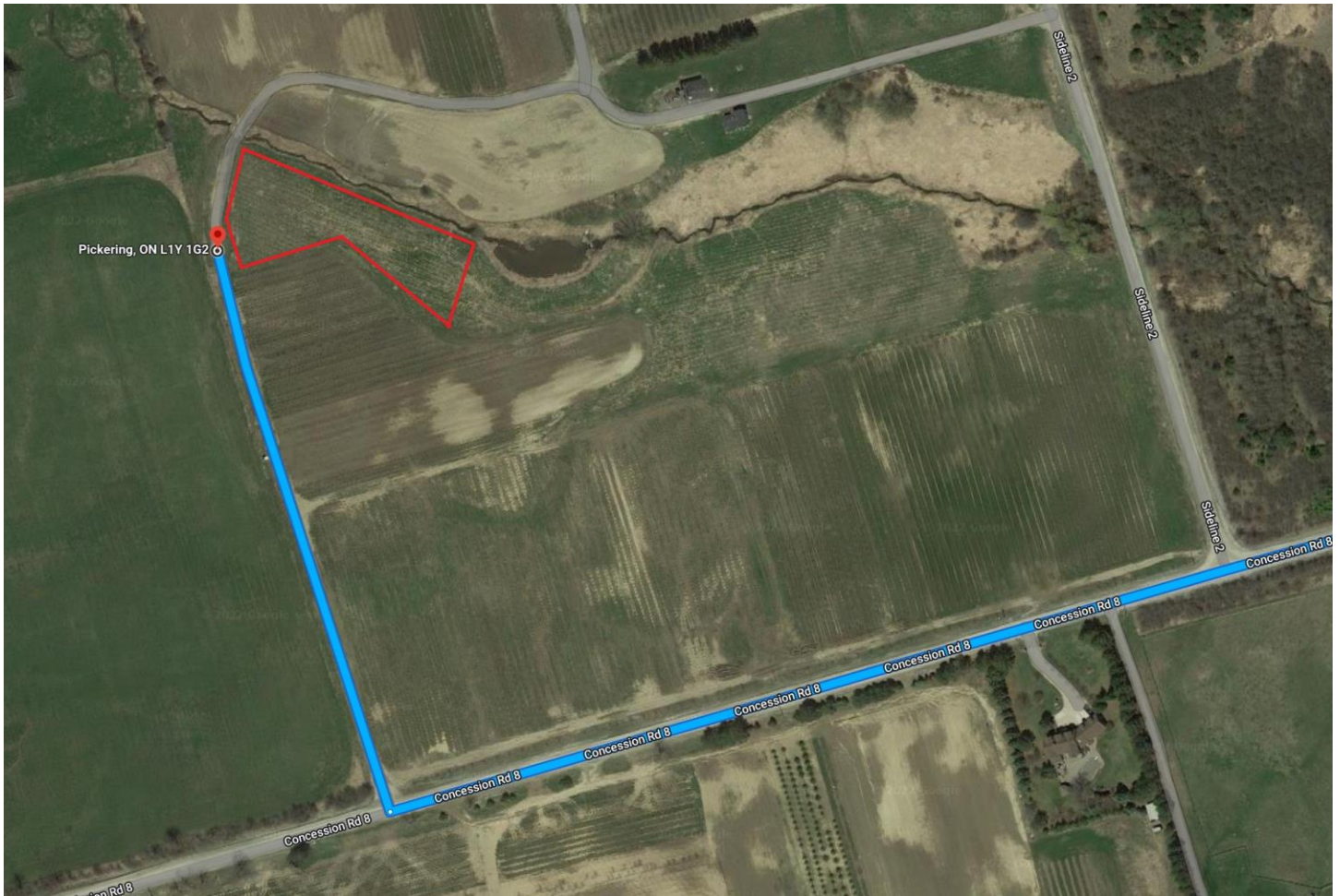
# RCFCT – Field Proposal

---

Travel 1.4km on Concession Road 8 past Sideline 2

Turn Right (North) off of Concession Road 8 on the first laneway past (West of) sideline 2.

Travel 250m North on the laneway, the proposed field will be on the right hand side (East Side) of the laneway.



<https://goo.gl/maps/xKrPcTnhkEzBT677> Location of end of driveway